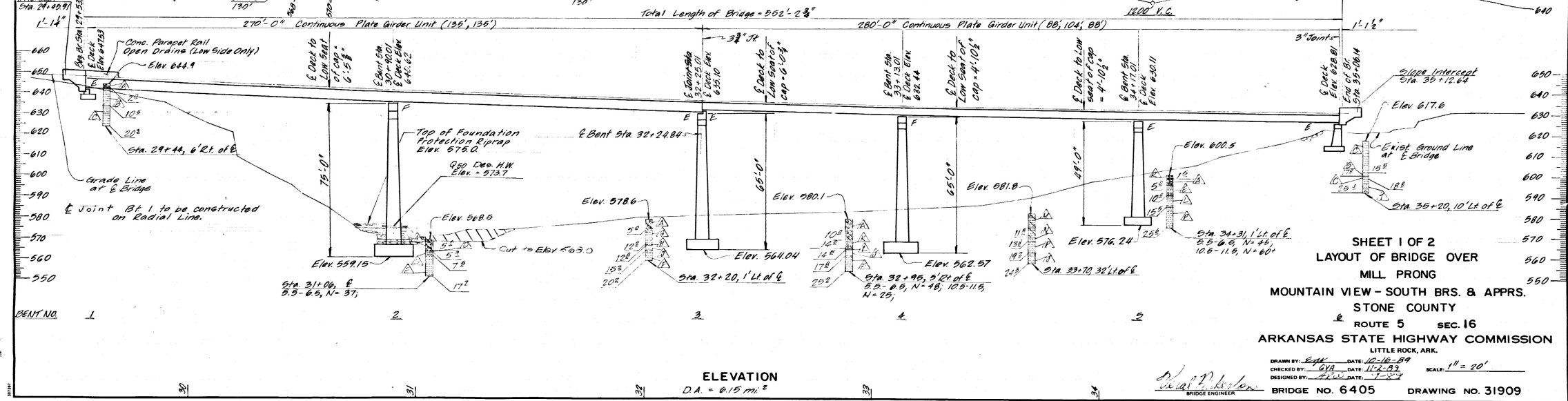
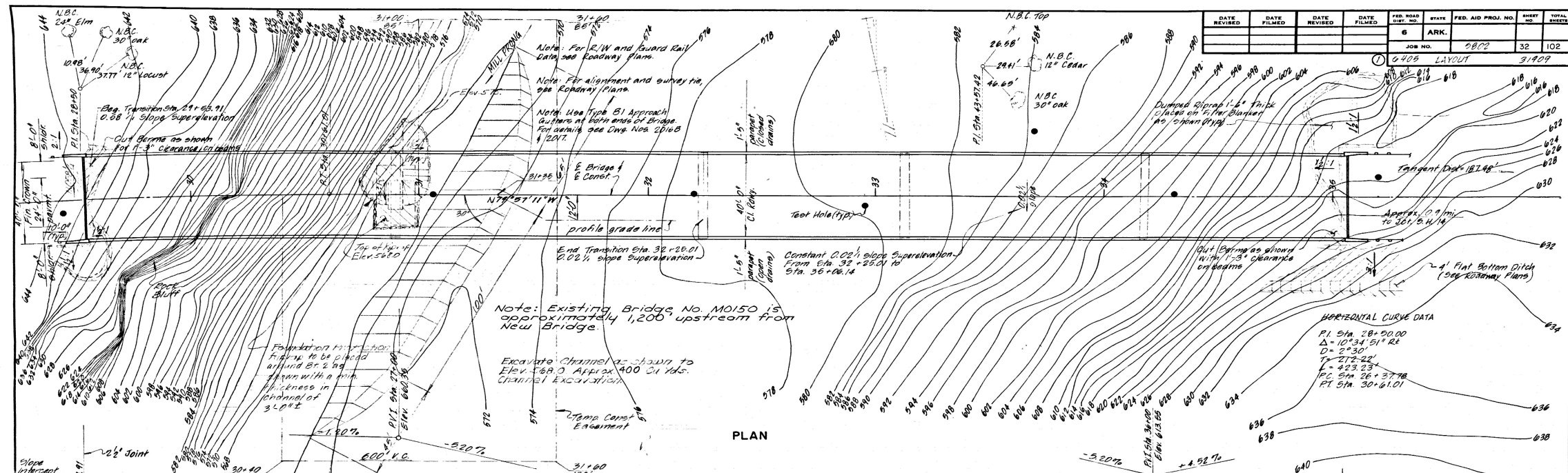


DATE REVISED	DATE FILMED	DATE REVISED	DATE FILMED	FED. ROAD DIST. NO.	STATE	FED. AID PROJ. NO.	SHEET NO.	TOTAL SHEETS
				6	ARK.		32	102

JOB NO. 5802  
 6405 LAYOUT 31909



SHEET 1 OF 2  
 LAYOUT OF BRIDGE OVER  
 MILL PRONG  
 MOUNTAIN VIEW - SOUTH BRS. & APPRS.  
 STONE COUNTY  
 ROUTE 5 SEC. 16  
 ARKANSAS STATE HIGHWAY COMMISSION  
 LITTLE ROCK, ARK.

BRIDGE NO. 6405 DRAWING NO. 31909

